

IFE-SS

Worm Drive Clamps Swedish Style



www.ife-group.com

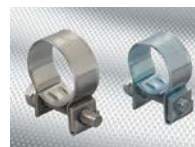


For unparalleled performance in critical applications, look no further than IFE's Swedish-style worm-drive hose clamps. Renowned for their exceptional quality, these premium clamps are trusted globally, both on land and at sea, for their unmatched strength, dependability, and extended service life. When reliability matters most, IFE's Swedish-style worm-drive hose clamps deliver superior results you can count on.

- 1-piece tubular housing (non-welded) for maximum strength
- Smooth I.D. reduces hose damage and maximizes conversion of torque to clamping force
- Rolled edges protect hose from abrasion
- The choice of major yacht-makers in North America, Europe and Asia



IFE Americas is a global provider of sealing and retaining solutions to meet customer needs. We offer a wide range of clamps, couplings, straps, and sleeves, with in-house testing facilities and technical support.



IFE-SS: Worm Drive Clamps Swedish Style



www.ife-group.com

- All AISI 316 stainless steel (band, housing and screw) for marine applications
- Available in 10mm and 12mm bandwidth and 7mm screw head
- Special sizes and other materials are available for high-volume orders. Custom sizes with shorter or extended thread patterns are also available.
- Stock material options include W5 (all 316 stainless steel screw, band and housing)
- Other material options exist, including W1 (all zinc plated carbon steel screw, band and housing)
- All sizes are stock items

13/32" (10mm) Band Width, 9/32" (7mm) Screw Head

W5 Part No.	Clamping Range inch (mm)	SAE Size	W5 Part No.	Clamping Range inch (mm)	SAE Size
122 111 2705 0014	5/16-9/16 (8-14)	3	122 111 2705 0038	1 1/32-1 1/2 (26-38)	16
122 111 2705 0017	7/16-21/32 (11-17)	4	122 111 2705 0044	1 1/4-1 23/32 (32-44)	20
122 111 2705 0020	1/2-25/32 (13-20)	6	122 111 2705 0050	1 1/2-1 31/32 (38-50)	24
122 111 2705 0024	19/32-15/16 (15-24)	8	122 111 2705 0056	1 23/32-2 7/32 (44-56)	28
122 111 2705 0028	3/4-1 3/32 (19-28)	10	122 111 2705 0065	1 31/32-2 9/16 (50-65)	32
122 111 2705 0032	7/8-1 1/4 (22-32)	12			

15/32" (12mm) Band Width, 9/32" (7mm) Screw Head

W5 Part No.	Clamping Range inch (mm)	SAE Size	W5 Part No.	Clamping Range inch (mm)	SAE Size
122 112 27050024	19/32-15/16 (15-24)	8	122 112 2705 0120	3 1/32-4 23/32 (77-120)	68
122 112 2705 0028	3/4-1 3/32 (19-28)	10	122 112 2705 0130	4 11/32-5 1/8 (110-130)	74
122 112 2705 0032	7/8-1 1/4 (22-32)	12	122 112 2705 0138	4 3/32-5 7/16 (104-138)	80
122 112 2705 0038	1 1/32-1 1/2 (26-38)	16	122 112 2705 0150	4 27/32-5 29/32 (123-150)	80
122 112 2705 0044	1 1/4-1 23/32 (32-44)	20	122 112 2705 0155	4 29/32-6 3/32 (125-155)	84
122 112 2705 0050	1 1/2-1 31/32 (38-50)	24	122 112 2705 0165	5 1/8-6 1/2 (130-165)	96
122 112 2705 0056	1 23/32-2 7/32 (44-56)	28	122 112 2705 0180	5 29/32-7 3/32 (150-180)	104
122 112 2705 0063	1 3/4-2 1/2 (46-63)	30	122 112 2705 0190	6 11/16-7 15/32 (170-190)	110
122 112 2705 0065	1 31/32-2 9/16 (50-65)	32	122 112 2705 0205	6 7/8-8 1/16 (175-205)	122
122 112 2705 0075	2 9/32-2 15/16 (58-75)	40	122 112 2705 0220	7 7/8-8 21/32 (200-220)	138
122 112 2705 0085	2 3/8-3 11/32 (68-85)	44	122 112 2705 0231	7 7/8-9 3/32 (200-231)	138
122 112 2705 0095	3 1/32-3 3/4 (77-95)	52	122 112 2705 0256	8 29/32-10 3/32 (226-256)	154
122 112 2705 0101	3 3/4-3 31/32 (95-101)	60	122 112 2705 0282	9 7/8-11 3/32 (251-282)	170
122 112 2705 0112	3 7/16-4 13/32 (87-112)	64	122 112 2705 0307	10 29/32-1' 0 3/32 (277-307)	186

Due to our program of continuous improvement, specifications may be subject to change.

IFE Americas USA

12877 Emerson Drive, Suite 200
Brighton, MI 48116
Phone: +1 (248) 446-1900
E-mail: info@ife-group.com

IFE Americas México

Bernardo Quintana 7001 Torre 2 – 813
Col. Centro Sur. Querétaro, Qro. 76090
Phone: +52 (442) 245-1515
E-mail: info@ife-group.com

IFE Europe Sweden

Banérgatan 51
SE-115 22 Stockholm
Phone: +46 708 102 711
E-mail: info@ife-group.com

