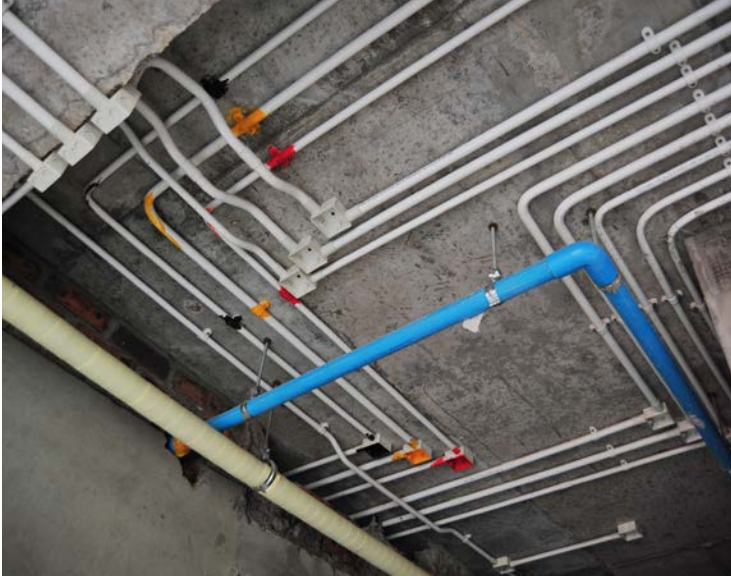


IFE-RC

Retaining Clamps



www.ife-group.com



IFE-RC are part of IFEs engineered mounting product range. Retaining clamps are custom designed for the customers application. IFE will guide the design process toward a solution that will work for the customers application and use existing tooling to avoid or at least minimize tooling costs. The parts can be designed with the following features:

- Ergonomic European style retaining clamps with material doublers where the fastener passes through to allow the part to be as flexible as possible while maximizing strength in the are where it is most needed.
- Slots or holes for the fastener to pass through to allow for adjustments and tolerances in mating components when needed.
- With or without rubber cushion to protect the cable, pipe or element that is retained.



IFE-RC are NOT stock parts and appropriate lead times are required.

IFE Americas is a global provider of sealing and retaining solutions to meet customer needs. We offer a wide range of clamps, couplings, straps, and sleeves, with in-house testing facilities and technical support.



IFE-RC: Retaining Clamps



www.ife-group.com

Design Questionnaire

Does the application require an "O" type retaining clamp that functions as more of a hanger?



➤ If it is round, what is the diameter of the cable, pipe or vessel that needs to be secured?

➤ If the item has a different geometry can a sketch or math data be provided that shows the external shape and dimensions?

➤ Does the application require a special distance from the fastener to the center line of the element that is being retained?

➤ What kind of corrosion resistance is required?

➤ Will the application be subjected to aggressive chemicals? If so what specifically?

➤ Does the customer have a salt spray resistance that they require?

Specification: _____

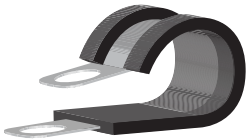
Hours to pass: _____

What is the pass fail criteria? (*for example less than 10% red rust or no red rust is permissible or part must still function and appearance is not important, etc.*)

➤ What is the temperature for the application?

➤ Estimated annual volume?

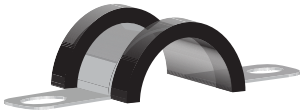
Does the application require a "P" type retaining clamp?



➤ Does the application have vibration or does the item being secured need protection from the metal strap by using a rubber liner in the clamp?

➤ For selection of the rubber material is EPDM acceptable? Plastisol? Does the customer have a special requirement for the rubber material like color or

Does the application require a "U" type clamp?



➤ Is the application in a high volume assembly environment where ease of assembly or ergonomic issues must be considered?

➤ Has the type of stud or screw that will secure the retaining clamp already been determined? If yes what type of fastener will be used?

Does the application require an "S" type retaining clamp for a special shape?



Like color or compound?

Due to our program of continuous improvement, specifications may be subject to change.

IFE Americas USA

12877 Emerson Drive, Suite 200
Brighton, MI 48116

Phone: +1 (248) 446-1900

E-mail: info@ife-group.com

IFE Americas México

Bernardo Quintana 7001 Torre 2 – 813
Col. Centro Sur. Querétaro, Qro. 76090

Phone: +52 (442) 245-1515

E-mail: info@ife-group.com

IFE Europe Sweden

Banérgatan 51
SE-115 22 Stockholm

Phone: +46 708 102 711

E-mail: info@ife-group.com

