



IFE-RC Retaining Clamps



IFE-RC are part of IFEs engineered mounting product range. Retaining clamps are custom designed for the customers application. IFE will guide the design process toward a solution that will work for the customers application and use existing tooling to avoid or at least minimize tooling costs. The parts can be designed with the following features:

- Ergonomic European style retaining clamps with material doublers where the fastener passes through to allow the part to be as flexible as possible while maximizing strength in the are where it is most needed.
- Slots or holes for the fastener to pass through to allow for adjustments and tolerances in mating components when needed.
- With or without rubber cushion to protect the cable, pipe or element that is retained.

www.ife-group.com



IFE-RC are NOT stock parts and appropriate lead times are required.

IFE Americas USA

7000 Kensington Road
Brighton, MI 48116-8334
Phone: +1 (248) 446-1900
E-mail: info@ife-group.com

IFE Americas México

Bernardo Quintana 7001 Torre 2 – 813
Col. Centro Sur. Querétaro, Qro. 76090
Phone: +52 (442) 245-1515
E-mail: info@ife-group.com

IFE Europe Sweden

Banérgatan 51
SE-115 22 Stockholm
Phone: +46 708 102 711
E-mail: info@ife-group.com

IFE-RC

Retaining Clamps



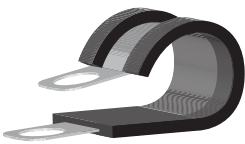
Design Questionnaire

Does the application require an "O" type retaining clamp that functions as more of a hanger?



- If it is round, what is the diameter of the cable, pipe or vessel that needs to be secured?
- If the item has a different geometry can a sketch or math data be provided that shows the external shape and dimensions?

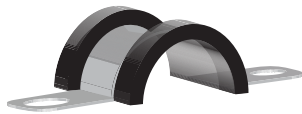
- Does the application require a special distance from the fastener to the center line of the element that is being retained?
- What kind of corrosion resistance is required?



Does the application require a "P" type retaining clamp?

- Does the application have vibration or does the item being secured need protection from the metal strap by using a rubber liner in the clamp?

- Will the application be subjected to aggressive chemicals? If so what specifically?
- Does the customer have a salt spray resistance that they require?



Does the application require a "U" type clamp?

- For selection of the rubber material is EPDM acceptable? Plastisol? Does the customer have a special requirement for the rubber material like color or

Specification: _____

Hours to pass: _____

What is the pass fail criteria? *(for example less than 10% red rust or no red rust is permissible or part must still function and appearance is not important, etc.)*



Does the application require an "S" type retaining clamp for a special shape?

- Is the application in a high volume assembly environment where ease of assembly or ergonomic issues must be considered?

- What is the temperature for the application?

Like color or compound?

- Has the type of stud or screw that will secure the retaining clamp already been determined? If yes what type of fastener will be used?

- Estimated annual volume?

Due to our program of continuous improvement, specifications may be subject to change.

www.ife-group.com



ISO 9001:2015

IFE Americas is a global provider of sealing and retaining solutions to meet customer needs. We offer a wide range of clamps, couplings, straps, and sleeves, with in-house testing facilities and technical support.



IFE Americas USA
7000 Kensington Road
Brighton, MI 48116-8334
Phone: +1 (248) 446-1900
E-mail: info@ife-group.com

IFE Americas México
Bernardo Quintana 7001 Torre 2 – 813
Col. Centro Sur. Querétaro, Qro. 76090
Phone: +52 (442) 245-1515
E-mail: info@ife-group.com

IFE Europe Sweden
Banérgatan 51
SE-115 22 Stockholm
Phone: +46 708 102 711
E-mail: info@ife-group.com